

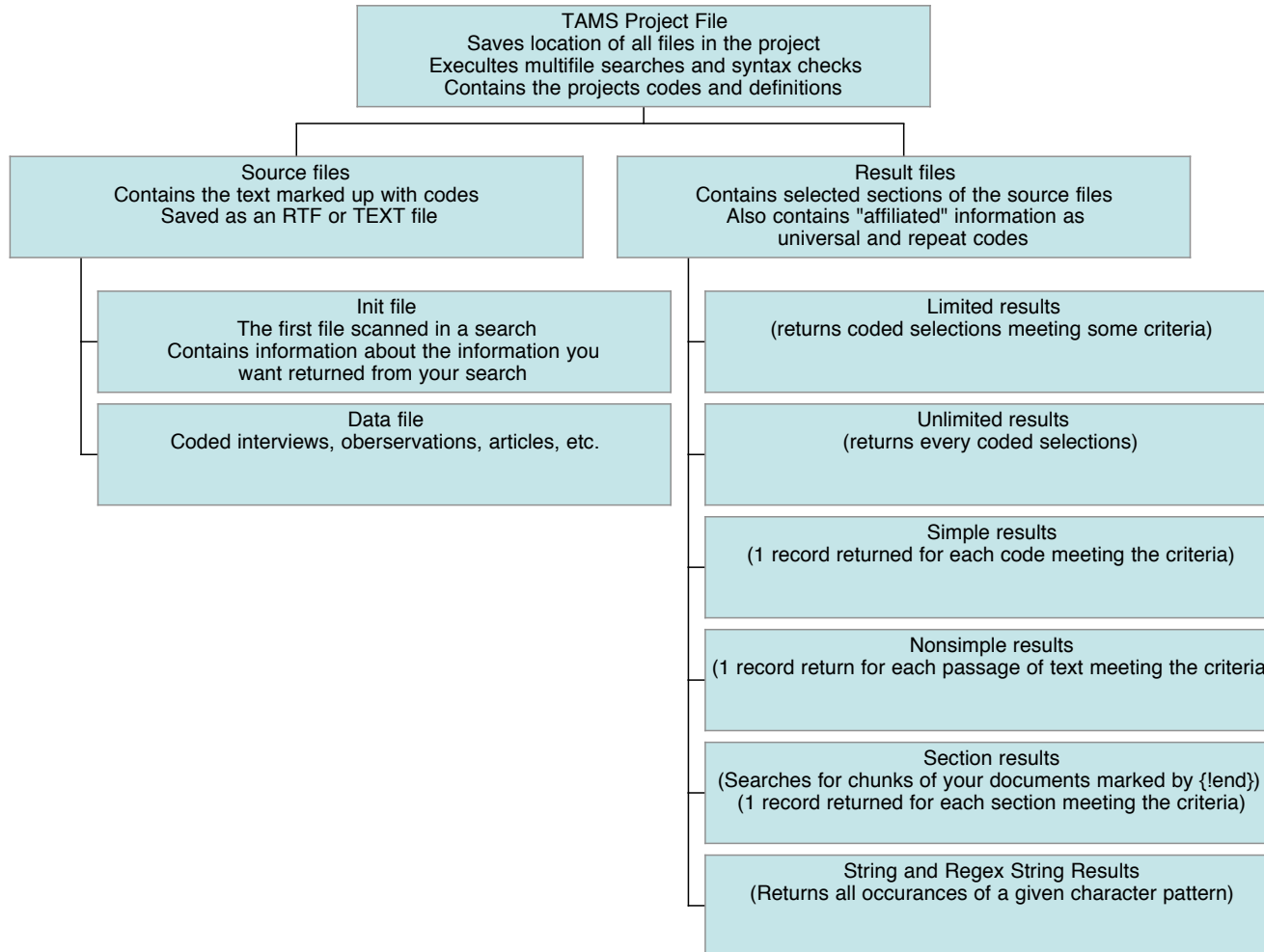
TAMS Analyzer

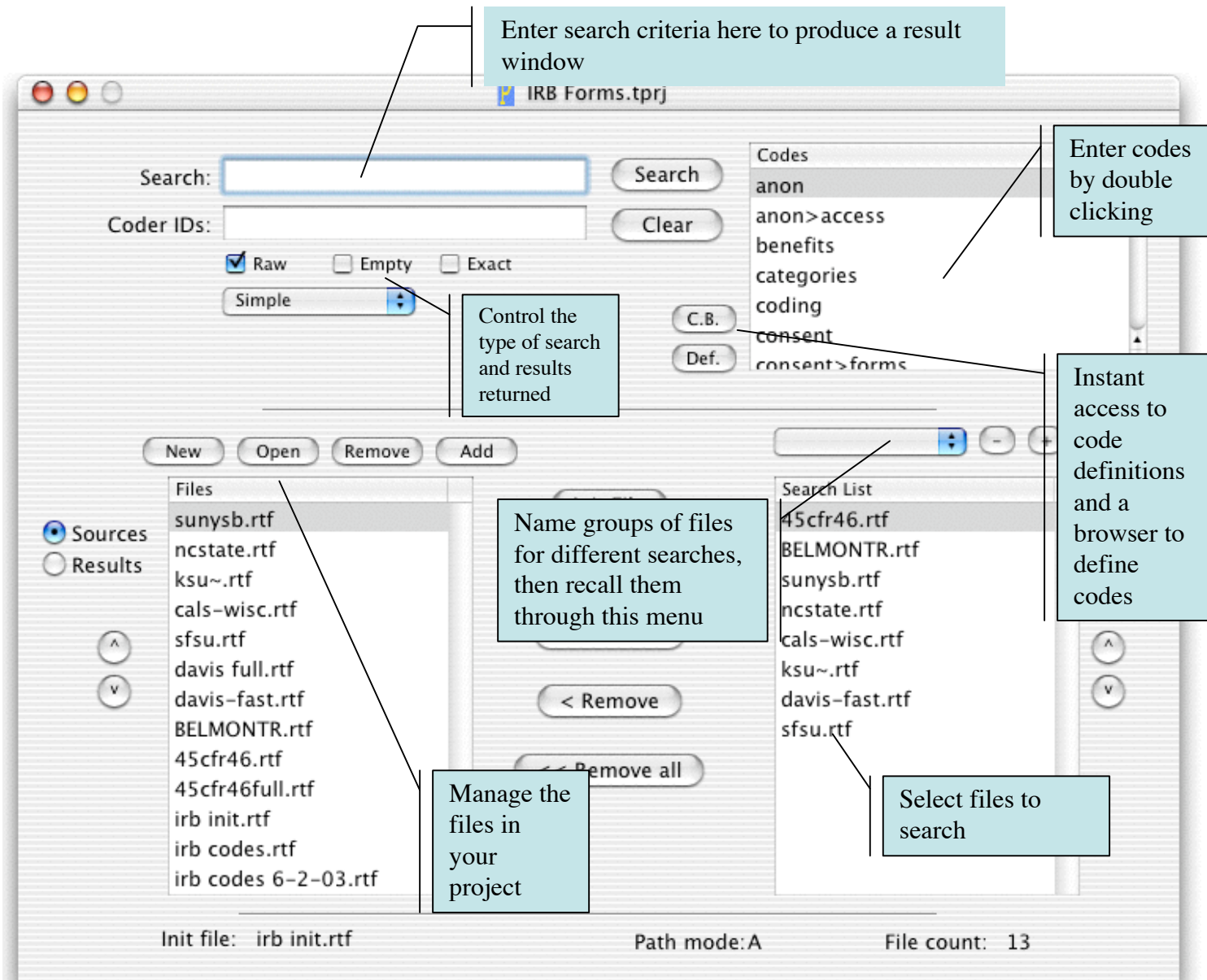
- TAMS = Text Analysis Markup System
- TAMS Analyzer is an interactive coding and analysis program using the TAMS system.
- The following pages offer pictorial introduction to the TAMS Analyzer qualitative analysis program.

File types

- There are three types of windows that a user must become familiar with
 - The project window also called the workbench which organizes the other types of files and allows you to conduct searches across files.
 - The source window which contains your interviews, observation notes, and allows you to code your documents.
 - Result windows which allow you to browse through coded passages meeting criteria you provide. This window also is used to analyze and recode sections of your source codes.

TAMS Analyzer Document Model



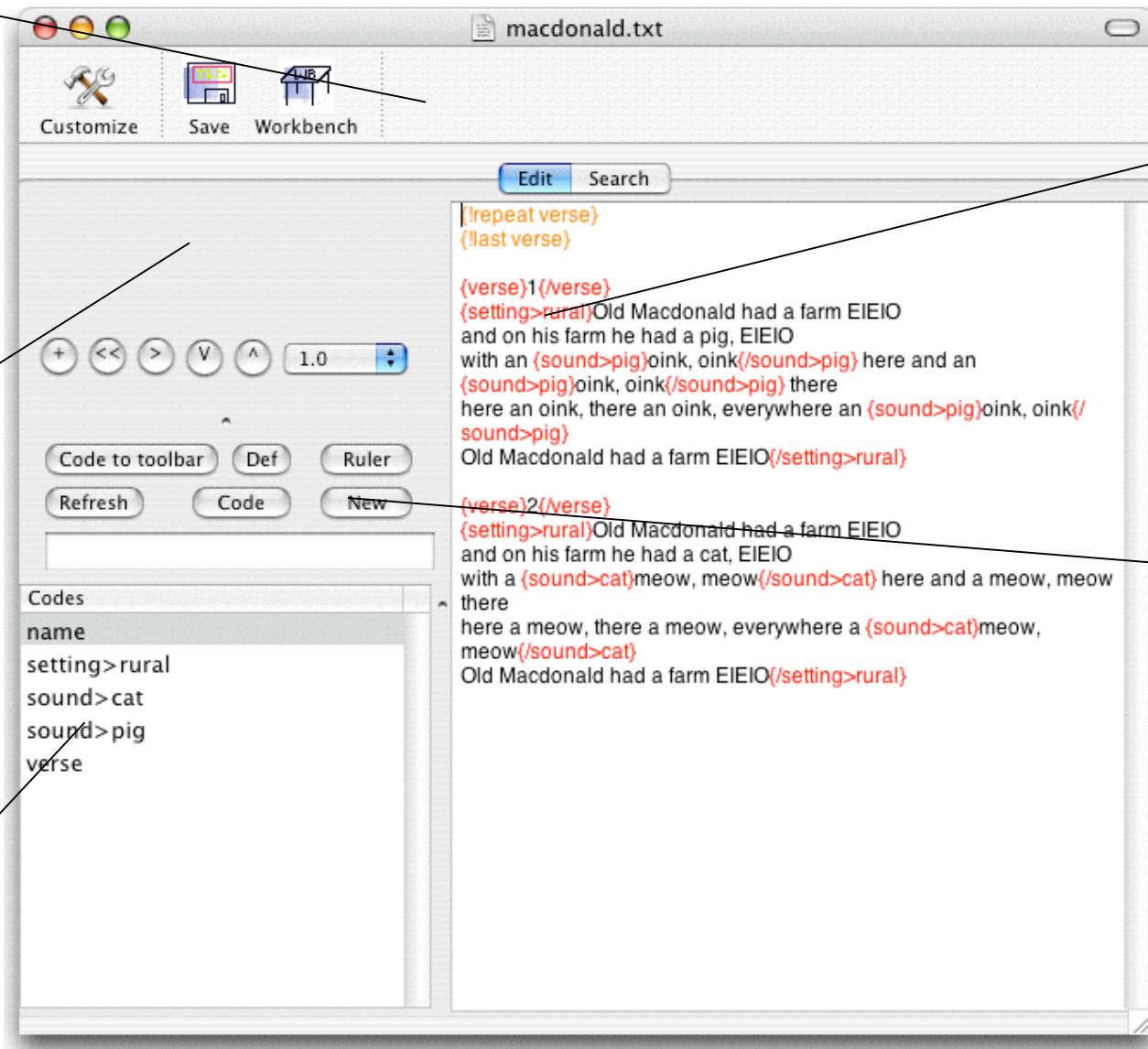


Project File

Frequently used codes and passages of text can be turned into 1-click button.

Audio and video can be attached to files. These files can be backspaced and slowed as with a transcription machine.

Code by selecting text and double clicking from your code list.



Codes can be hierarchical

Buttons give easy access to code definitions, creation of new codes, format ruler, and converting codes to toolbar buttons

Data file

You can leap straight to the original text to further explore context through this button

This top line indicates the searches you have conducted within the results.

Coded passages are shown in the main browser window.

Researcher can further search within the returned results of a search. Here through additional selections, we are examining 5 records out of a total 7 returned from the search.

Columns are provided for document wide information (universal codes), section specific information (repeat codes), attached information (comments), as well as the passage of interest.

A row in this table can represent either a coded passage, a portion of text meeting a set of code criteria, a portion of text containing a particular string, or a demarcated section of the document.

#	verse	_code	_data	_comment	_coder	_doc
1	1	sound>pig	{setting>rural}{sc			macd
2	1	sound>pig	{setting>rural}{sc			macd
	1	sound>pig	{setting>rural}{sc			
	2	sound>cat	{setting>rural}{sc			
	2	sound>cat	{setting>rural}{sc			

Result file

For more information see:

- The TAMS Analyzer User's Guide
- Coding for beginners
- Release notes for each recent release of TAMS Analyzer
- Older documentation that describes the TAMS system